

HISTORIC VICTORIAN-QUEEN ANNE!



BUILT: 1893 – County Records
LOT SIZE: 120' x 150'
2008 TAXES: \$2,438.22
HEAT: Hot Water
AIR CONDITIONING: 2 Window Units
WINDOWS: Double Hung
ROOF: Composition
SIDING: Narrow Wood Siding
GARAGE: 2-Car Detached 20' x 18'
COVERED FRONT PORCH: 12' X 28'
with swing

218 Lincoln Street, Wayne
\$129,500

MAIN LEVEL

1,239 square feet

FOYER: 9' x 14' 10", open staircase to second floor, oak floors, beautiful ornate woodwork, curved glass corner windows, transom over front door, pocket door to living room

LIVING ROOM: 15' x 13', oak floors, fireplace with tile surround and oak mantle with built-in mirror above, stained glass window, opens to foyer and dining room

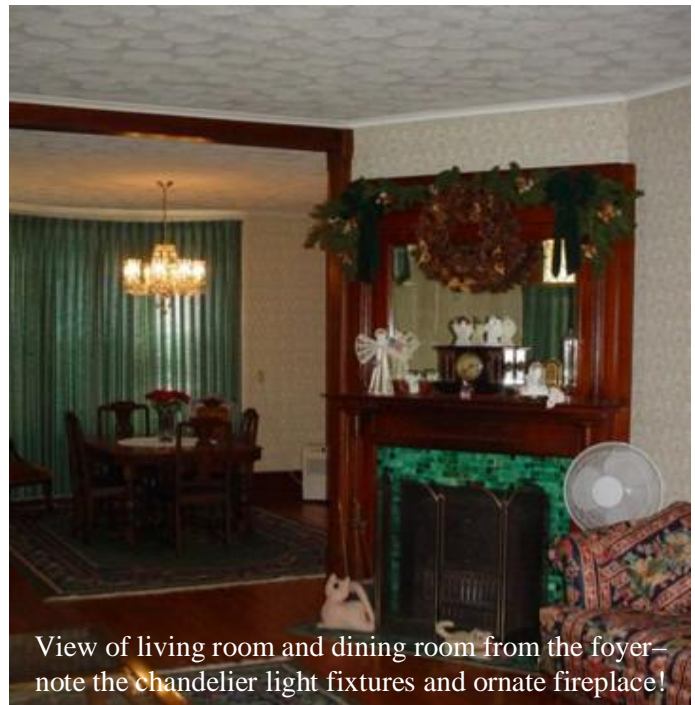
DINING ROOM: 15' 3" x 13' 6", oak floors, bowed bay-window, crystal chandelier light fixture, stained glass window

KITCHEN: wood laminate floor, built-in dishwasher, disposal, door to laundry area, access to basement and upper level, door to south porch

FAMILY ROOM: 23' X 12', carpeted, window air conditioner, bay window, door to back porch

BATH: stool, claw foot tub, sinks

Information herein deemed reliable, but not guaranteed.



View of living room and dining room from the foyer—note the chandelier light fixtures and ornate fireplace!



112 W. 2nd Street • Wayne, NE 68787
(402) 375-2134 • (800) 457-2134

Amy S. Schweers
Real Estate Broker
(402) 375-2134 office
(402) 833-8038 cell
(402) 375-5482 home
amy@propertyexchangepartners.com

